



OMES has partnered with Microsoft to offer their Azure Virtual Desktop Infrastructure (VDI) to increase agility.

Follow the steps below to access your VDI.

If you have any issues or problems with any of these steps, please contact the OMES Service Desk by [email](#) or at 405-521-2444.

Instructions for web-based access

Azure VDI can be accessed by web page or installed Windows Remote Desktop client.

Supported Web Browsers are Chrome, Firefox and the latest version of Microsoft Edge.

Note: unsupported browsers will allow access but may not allow pass through of sound on applications like Teams.

For web-based access please go to [this](#) link.

You will need to use your email address to allow you to be sent to the State of Oklahoma sign in portal.

At the State of Oklahoma sign in portal enter your email address and sign in password.



Sign in

No account? [Create one!](#)

[Can't access your account?](#)

[Sign-in options](#)

Back

Next

After sign in you will be presented with a list of resources or virtual desktops you are currently allowed to access.



Sign in with your organizational account

Sign in


Sign into the State of Oklahoma Portal. Please enter your credentials when asked.

Double click the computer icon to start the desktop.

☰ All Resources

Privacy settings for managed resources have been preset by your organization. [Learn More](#)

- > OMES Agency Dev 001 WVD-090
- ✓ OMES_Test

 090-agenc-_pool

Instructions for Microsoft Remote Client Install

Supported platforms are Windows, IOS and Android operating systems.

iOS and Android can be downloaded by searching for the Microsoft Remote Desktop application from the Apple and Google stores respectively.

The Microsoft Windows client version of Microsoft Remote Desktop can be used for access to a Windows Virtual Desktop that will supports multiple monitors.

Important: Do not use the version of Remote Desktop Client found in the Microsoft Store.

To download the latest version of the Windows Remote Desktop client please click [this](#) link.

Select the Windows 64-bit or 32-bit installation.

Install the client

Choose the client that matches the version of Windows. The new Remote Desktop client (MSRDC) supports Windows 10, Windows 10 IoT Enterprise, and Windows 7 client devices.

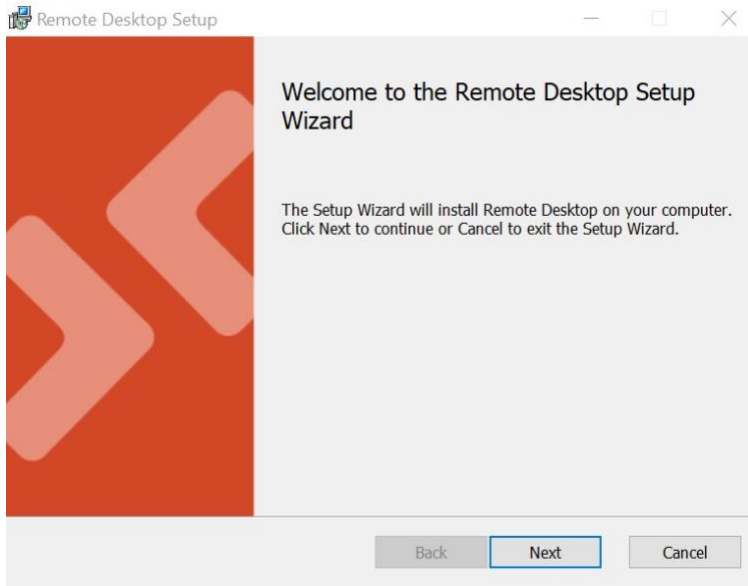
- [Windows 64-bit](#)
- [Windows 32-bit](#)
- [Windows ARM64](#)

You can install the client for the current user, which doesn't require admin rights, or your admin can install and configure the client so that all users on the device can access it.

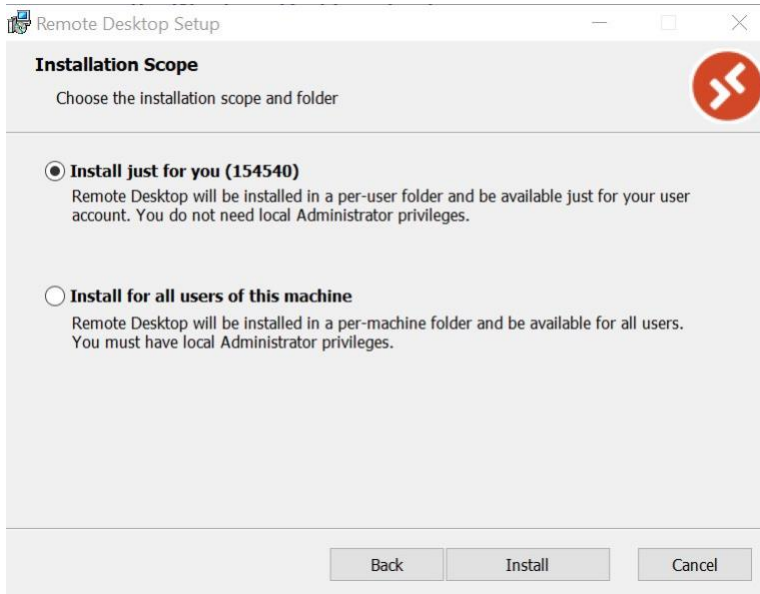
When prompted select run to install the program.



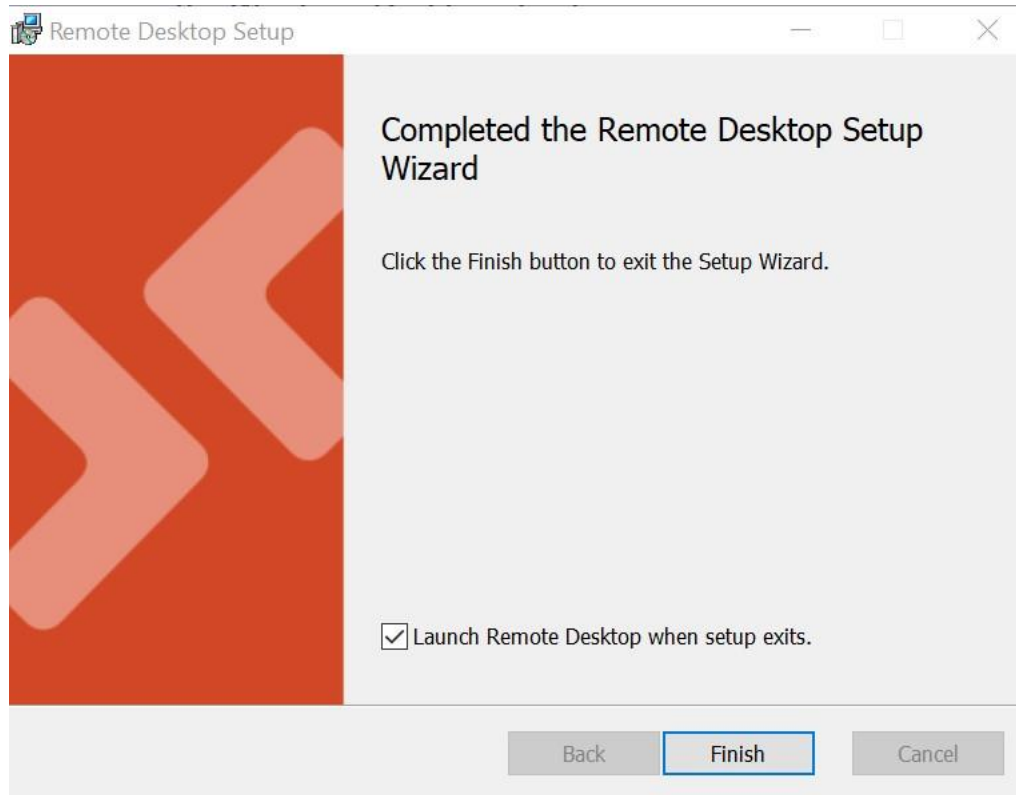
Click Next.



Select just for you.

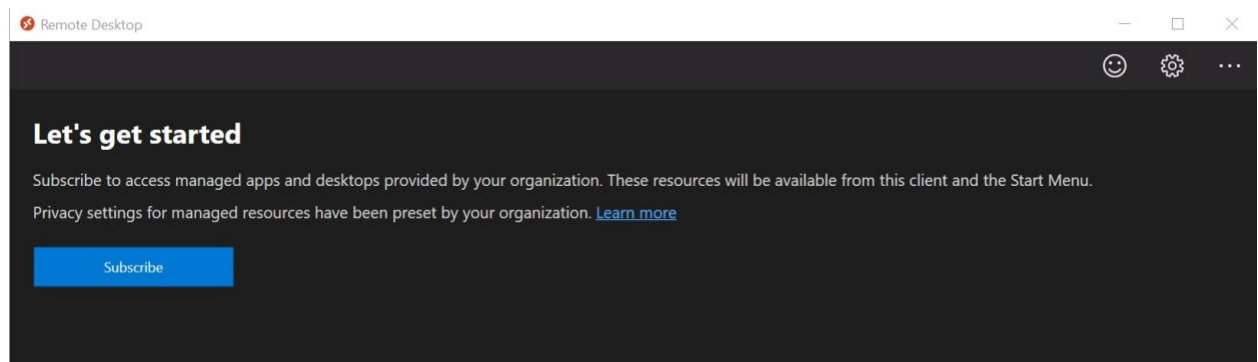


Select finish to complete the installation and launch the application.



After installation start the Microsoft Remote Desktop

The first time it is ran you will need to select Subscribe. This will only happen on the first sign on.



At this point you will be taken to a O365 portal for sign on.

Once sign on is complete the following screen will appear with access to any resources that you have been granted permissions to access.

